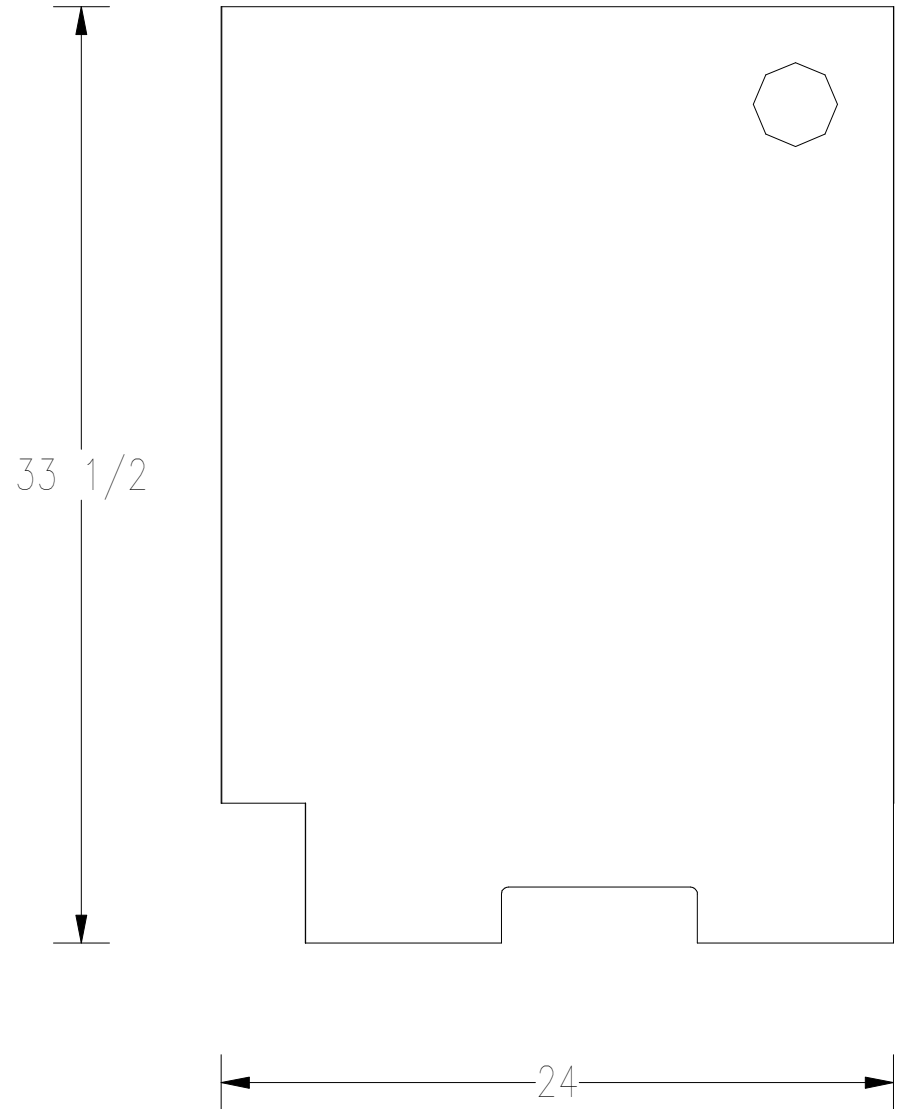
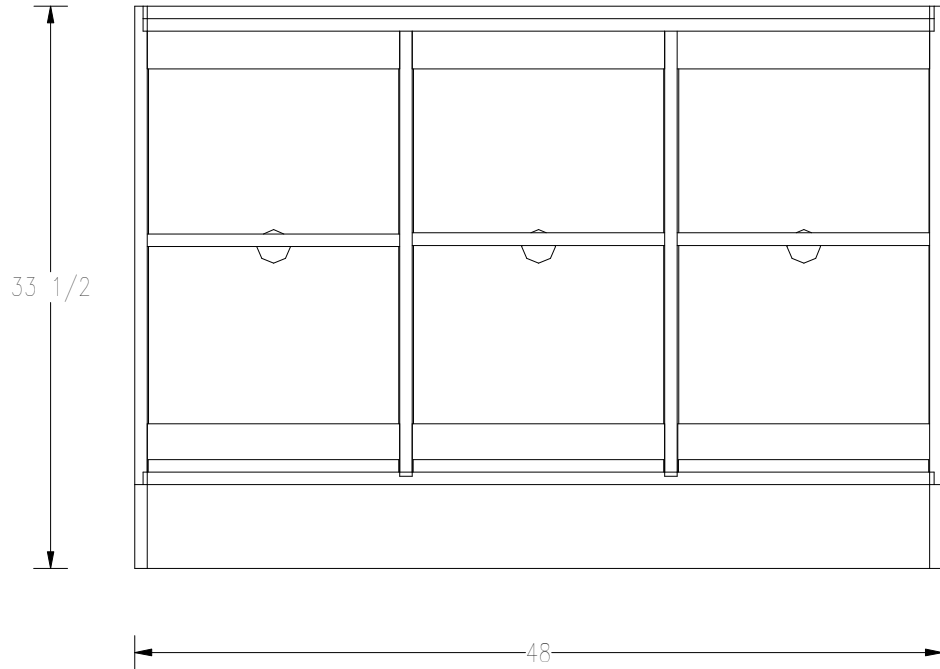


OGS48 - 3

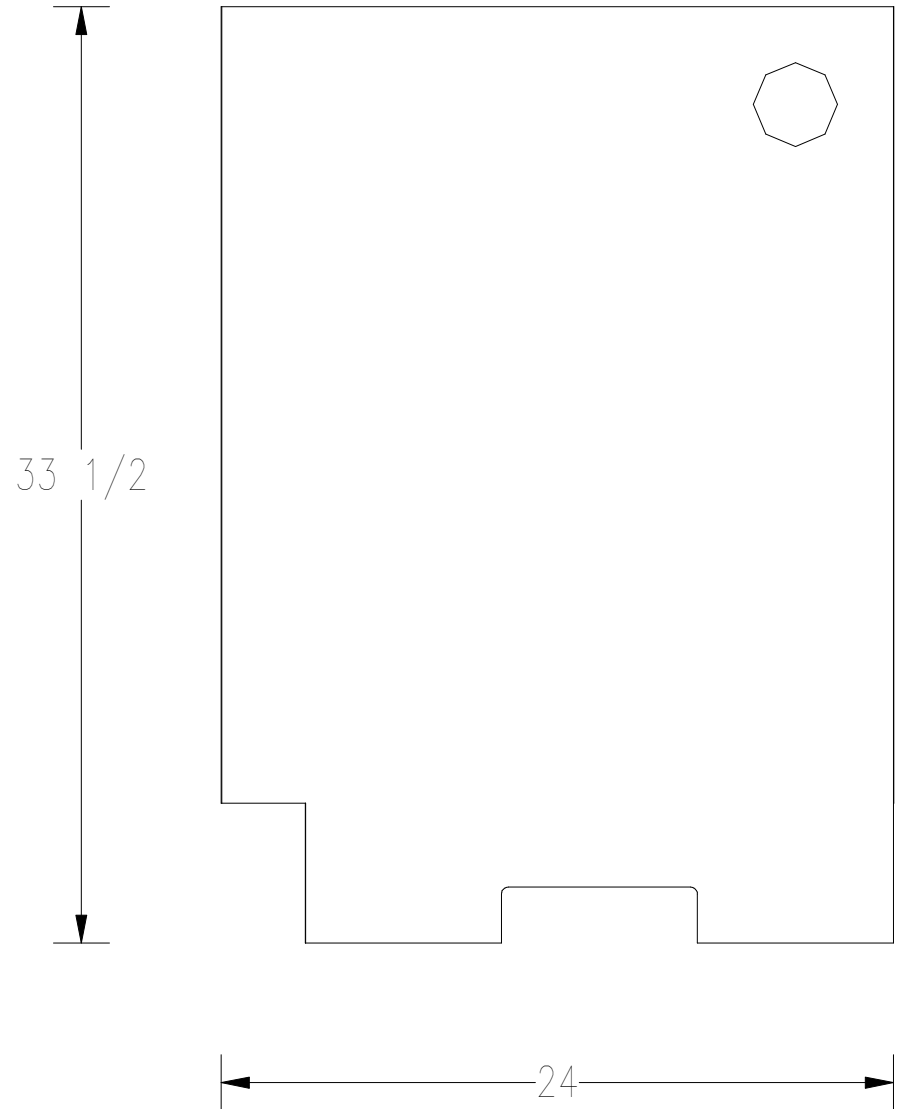
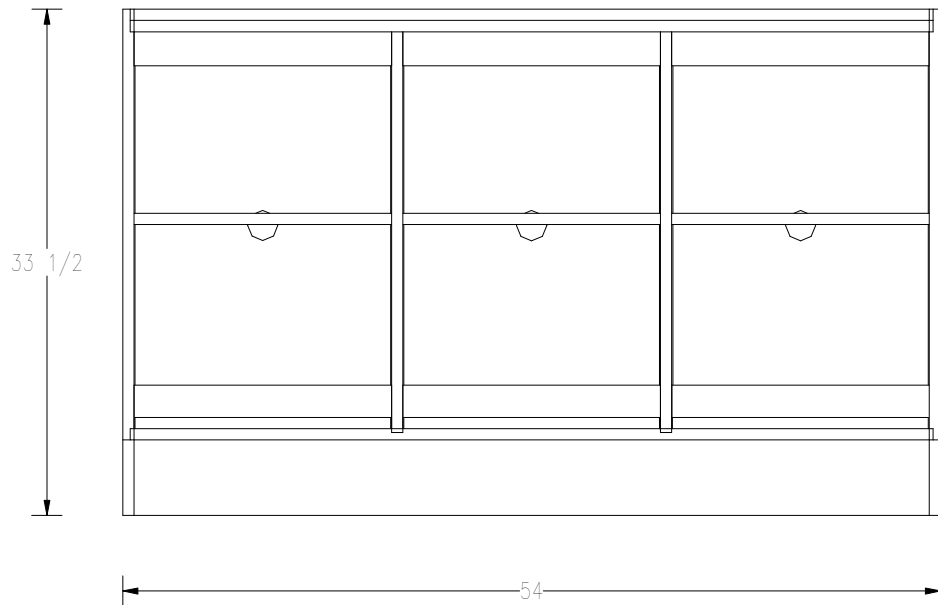


15 Elaine Drive
 Hermon, ME 04401
 p. 207-848-7770
 f. 207-848-7771
 www.bdsolid.com

B & D MODULAR CABINETS		DIMENSIONS		△	DATE	REFERENCE	SHEET #
PRODUCT NAME:	OPEN STORAGE 48	WIDTH:	48	--	--	--	01
PRODUCT ID:	OGS48 - 3	HEIGHT:	33 1/2				
PRODUCT DISCRIPTION:	OPEN STORAGE 48	DEPTH:	24				
DRAWN BY:	D. PELLETIER	TOE:	HEIGHT = 5 RECESS = 3				

This drawing was prepared exclusively for you with the understanding that b&d - fabrication by design reserves the sole rights to its possession and use. Any reproduction or use of this drawing that is detrimental to our business is prohibited.

OGS54 - 3

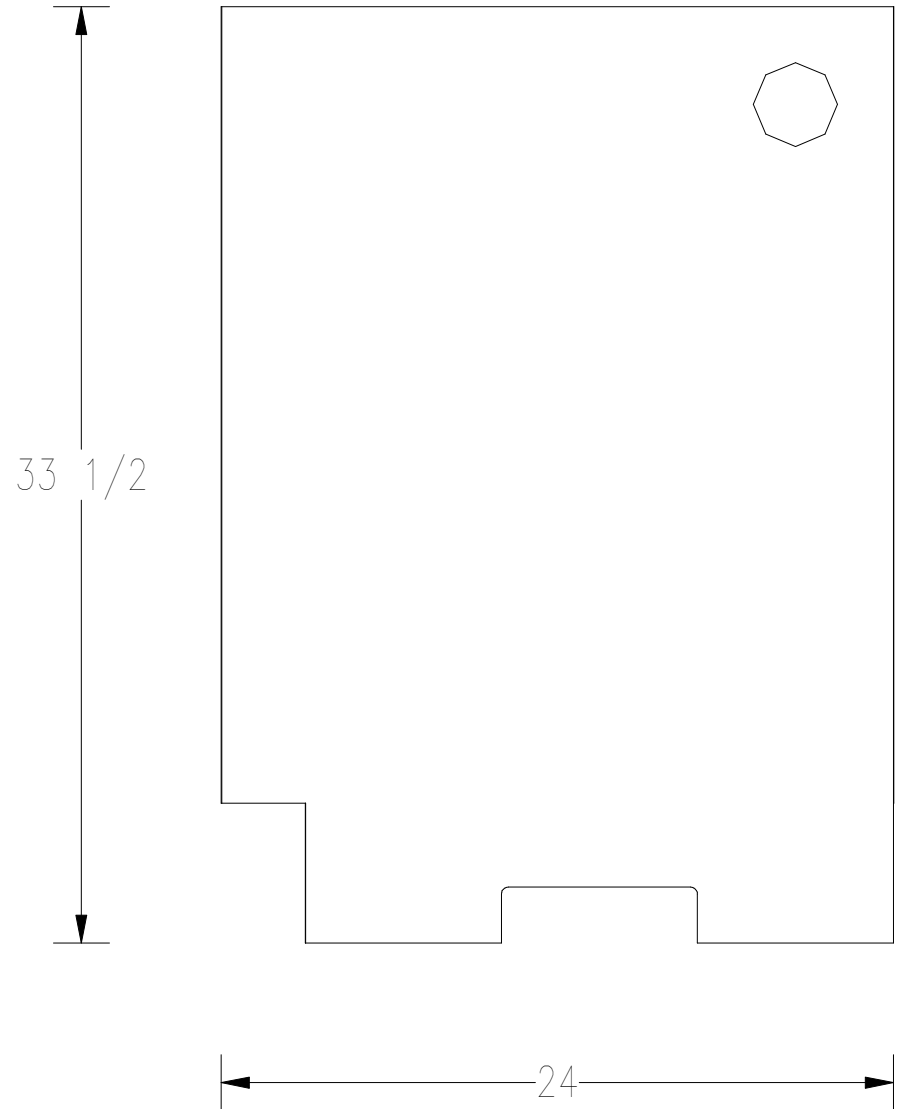
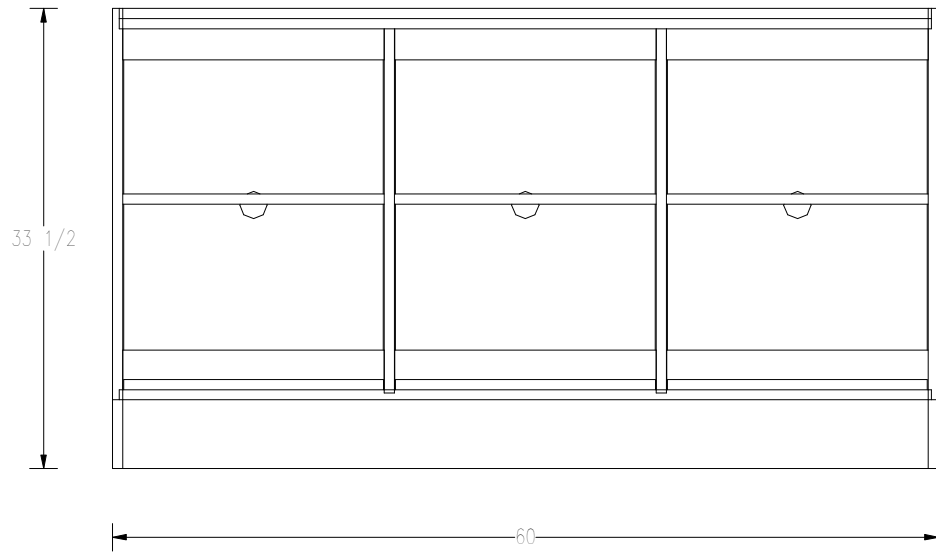


15 Elaine Drive
 Hermon, ME 04401
 p. 207-848-7770
 f. 207-848-7771
 www.bdsolid.com

B & D MODULAR CABINETS		DIMENSIONS		△	DATE	REFERENCE	SHEET #
PRODUCT NAME:	OPEN STORAGE 54	WIDTH:	54	--	--	--	01
PRODUCT ID:	OGS54 - 3	HEIGHT:	33 1/2				
PRODUCT DISCRPTION:	OPEN STORAGE 54	DEPTH:	24				
DRAWN BY:	D. PELLETIER	TOE:	HEIGHT = 5 RECESS = 3				

This drawing was prepared exclusively for you with the understanding that b&d - fabrication by design reserves the sole rights to its possession and use. Any reproduction or use of this drawing that is detrimental to our business is prohibited.

OGS60 - 3



15 Elaine Drive
 Hermon, ME 04401
 p. 207-848-7770
 f. 207-848-7771
 www.bdsolid.com

B & D MODULAR CABINETS

PRODUCT NAME:	OPEN STORAGE 60 □
PRODUCT ID:	OGS60 - 3
PRODUCT DISCRIPTION:	OPEN STORAGE 60
DRAWN BY:	D. PELLETIER

DIMENSIONS

WIDTH:	60
HEIGHT:	33 1/2
DEPTH:	24
TOE:	HEIGHT = 5 RECESS = 3

△	DATE	REFERENCE	SHEET #
--	--	--	01