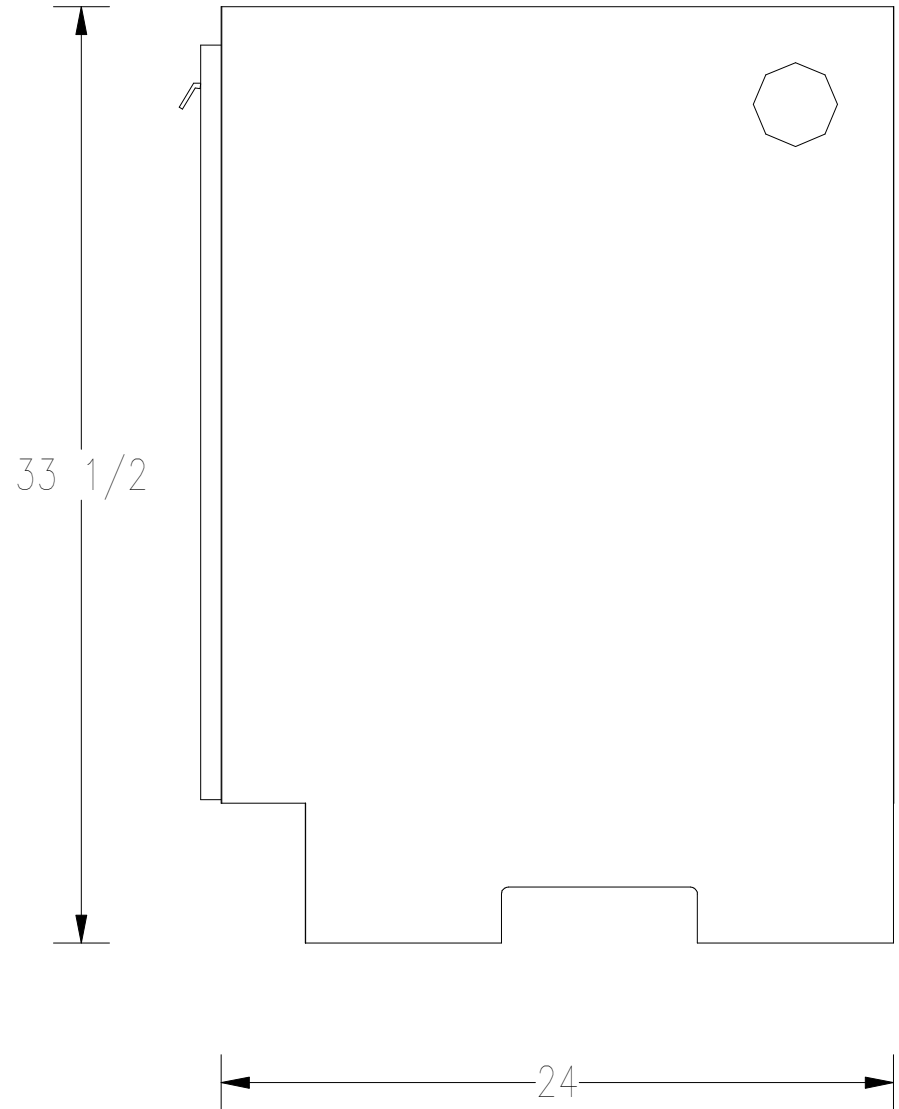
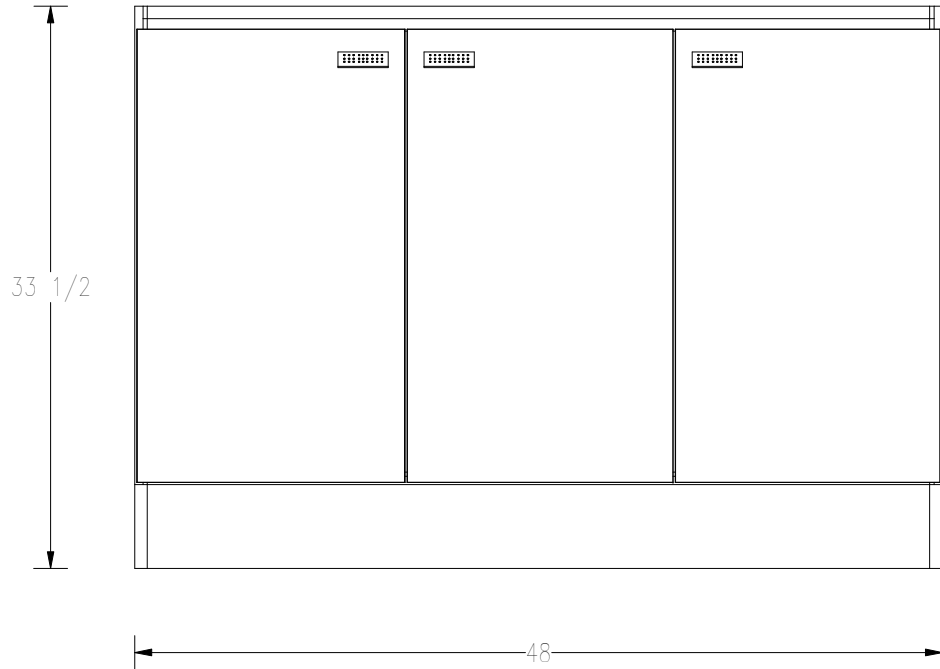


GS48 - 3

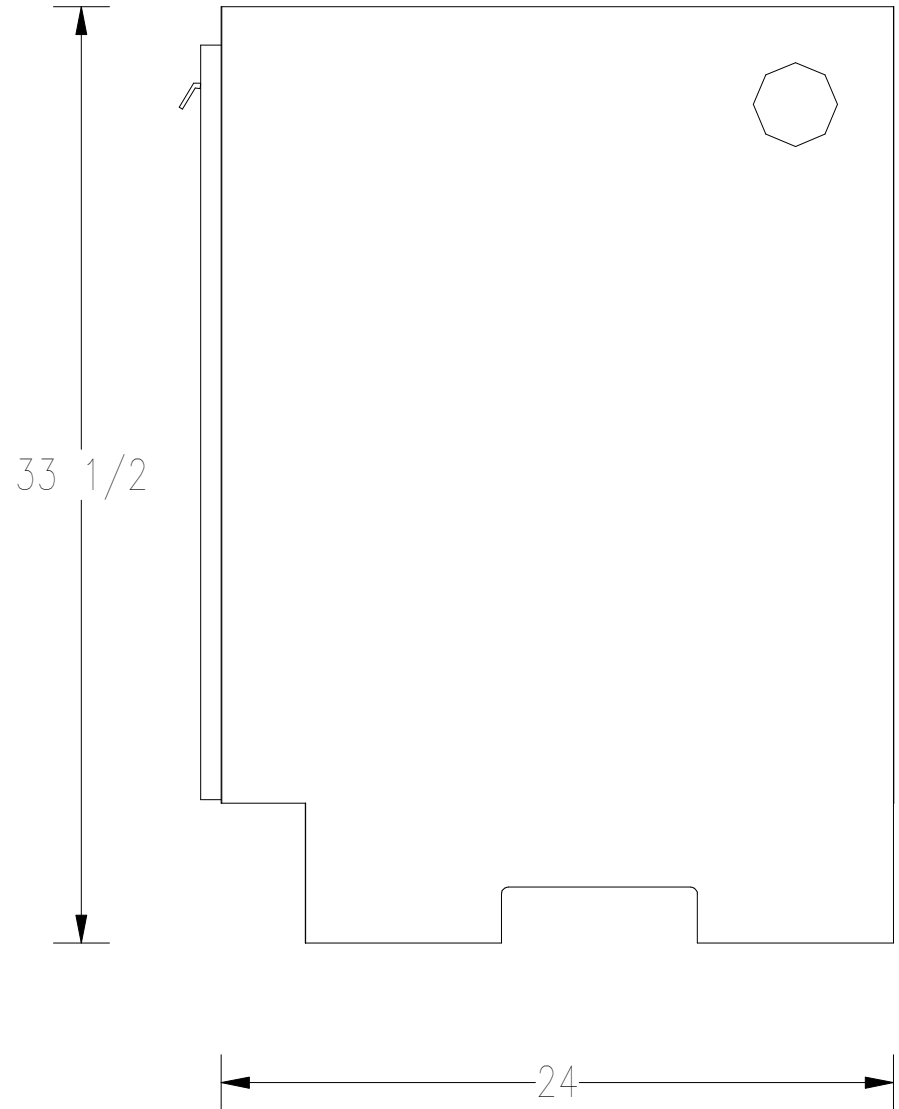
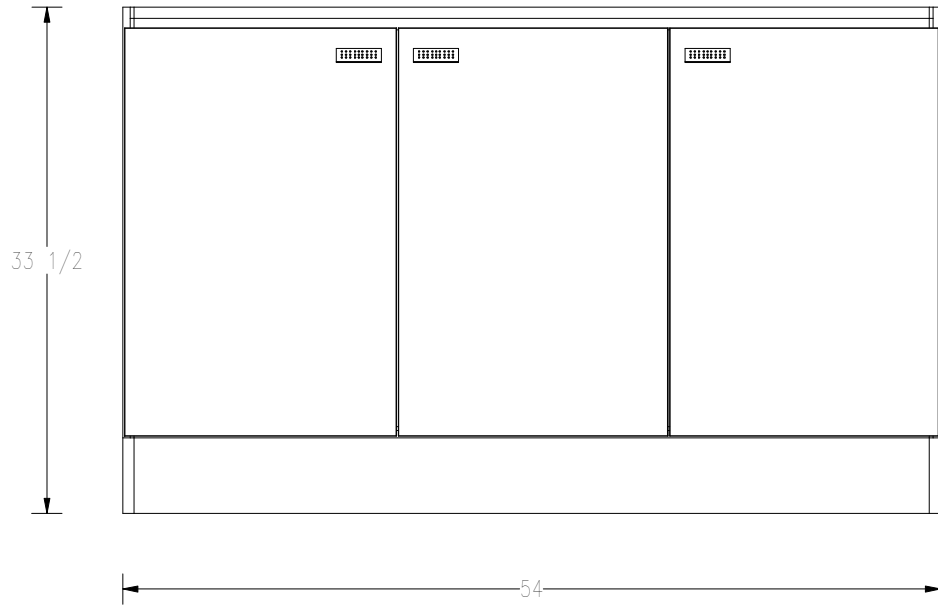


15 Elaine Drive
 Hermon, ME 04401
 p. 207-848-7770
 f. 207-848-7771
 www.bdsolid.com

B & D MODULAR CABINETS		DIMENSIONS		△	DATE	REFERENCE	SHEET #
PRODUCT NAME:	STORAGE 48	WIDTH:	48	--	--	--	01
PRODUCT ID:	GS48 - 3	HEIGHT:	33 1/2				
PRODUCT DISCRPTION:	STORAGE 48	DEPTH:	24				
DRAWN BY:	D. PELLETIER	TOE:	HEIGHT = 5 RECESS = 3				

This drawing was prepared exclusively for you with the understanding that b&d - fabrication by design reserves the sole rights to its possession and use. Any reproduction or use of this drawing that is detrimental to our business is prohibited.

GS54 - 3



15 Elaine Drive
 Hermon, ME 04401
 p. 207-848-7770
 f. 207-848-7771
 www.bdsolid.com

B & D MODULAR CABINETS

PRODUCT NAME:	STORAGE 54
PRODUCT ID:	GS54 - 3
PRODUCT DISCRPTION:	STORAGE 54
DRAWN BY:	D. PELLETIER

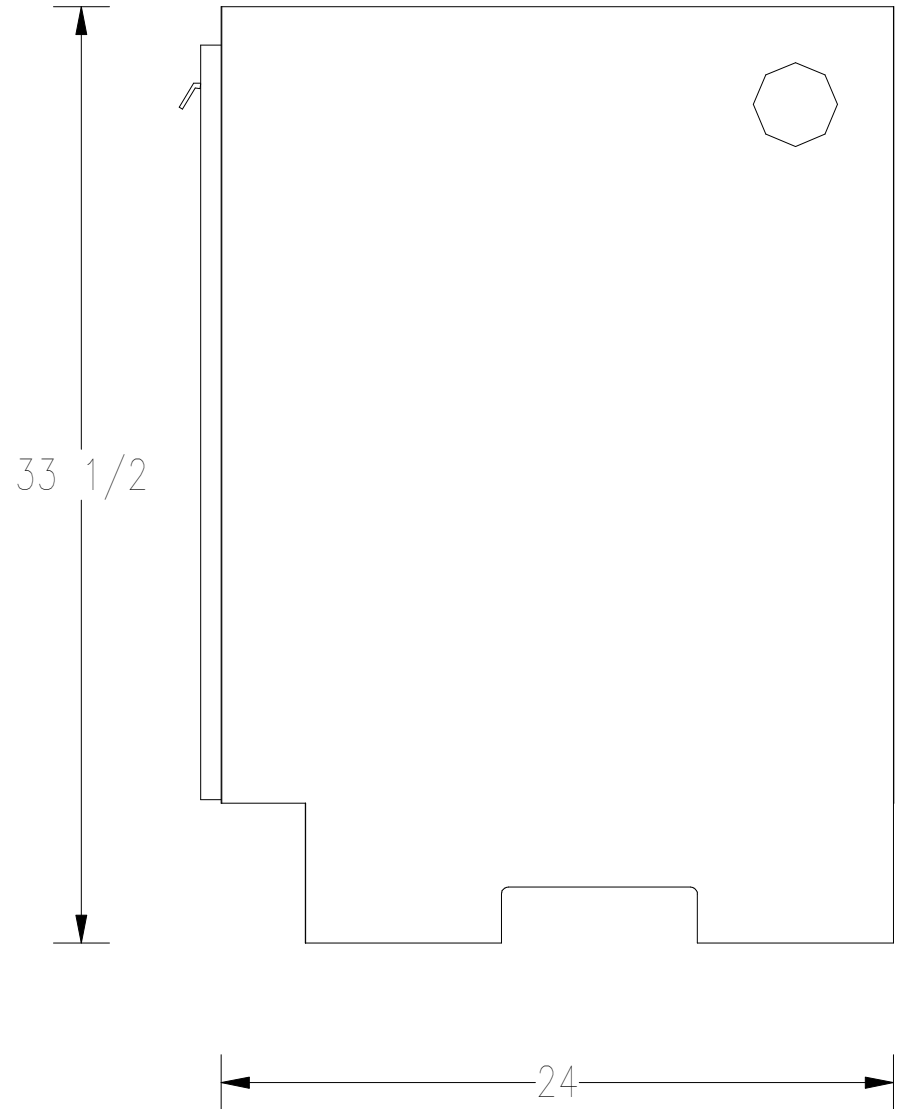
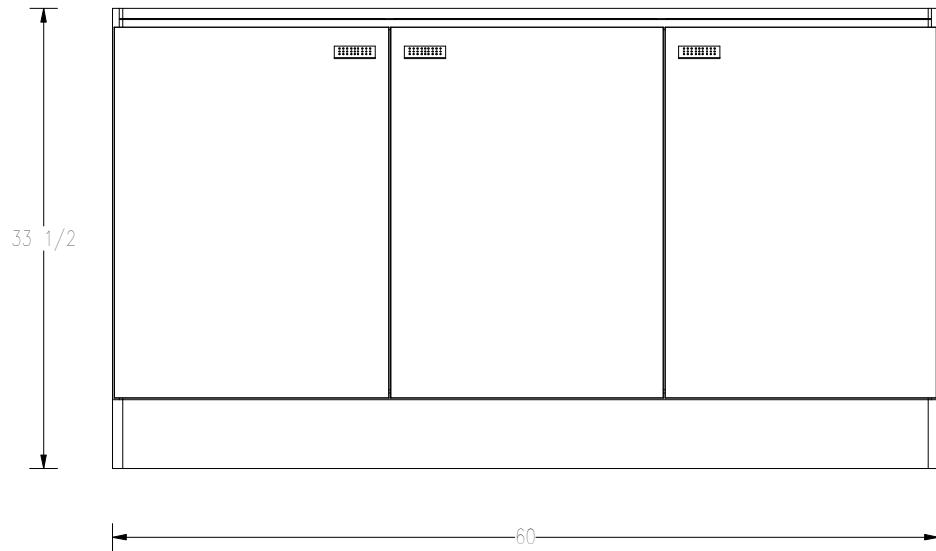
DIMENSIONS

WIDTH:	54
HEIGHT:	33 1/2
DEPTH:	24
TOE:	HEIGHT = 5 RECESS = 3

△	DATE	REFERENCE	SHEET #
--	--	--	01

This drawing was prepared exclusively for you with the understanding that b&d - fabrication by design reserves the sole rights to its possession and use. Any reproduction or use of this drawing that is detrimental to our business is prohibited.

GS60 - 3



15 Elaine Drive
 Hermon, ME 04401
 p. 207-848-7770
 f. 207-848-7771
 www.bdsolid.com

B & D MODULAR CABINETS		DIMENSIONS		△	DATE	REFERENCE	SHEET #
PRODUCT NAME:	STORAGE 60	WIDTH:	60	--	--	--	01
PRODUCT ID:	GS60 - 3	HEIGHT:	33 1/2				
PRODUCT DISCRPTION:	STORAGE 60	DEPTH:	24				
DRAWN BY:	D. PELLETIER	TOE:	HEIGHT = 5 RECESS = 3				

This drawing was prepared exclusively for you with the understanding that b&d - fabrication by design reserves the sole rights to its possession and use. Any reproduction or use of this drawing that is detrimental to our business is prohibited.