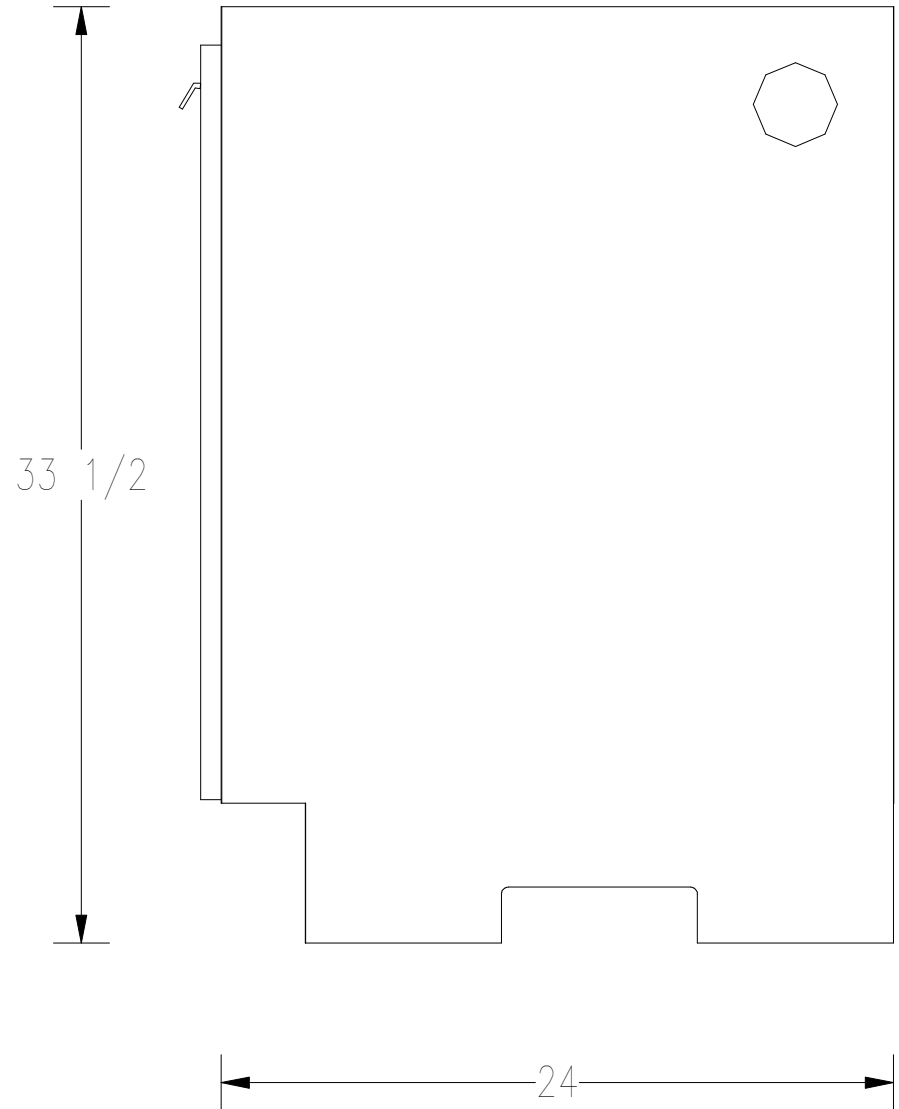
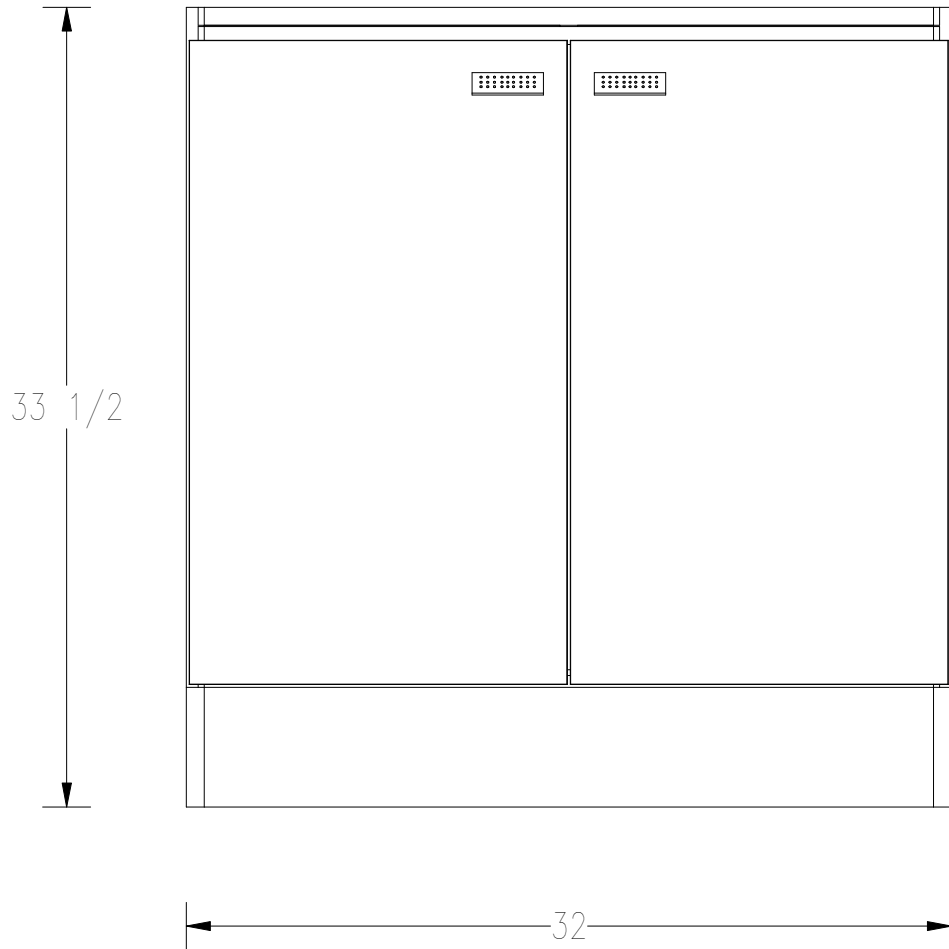


# GS32 - 2

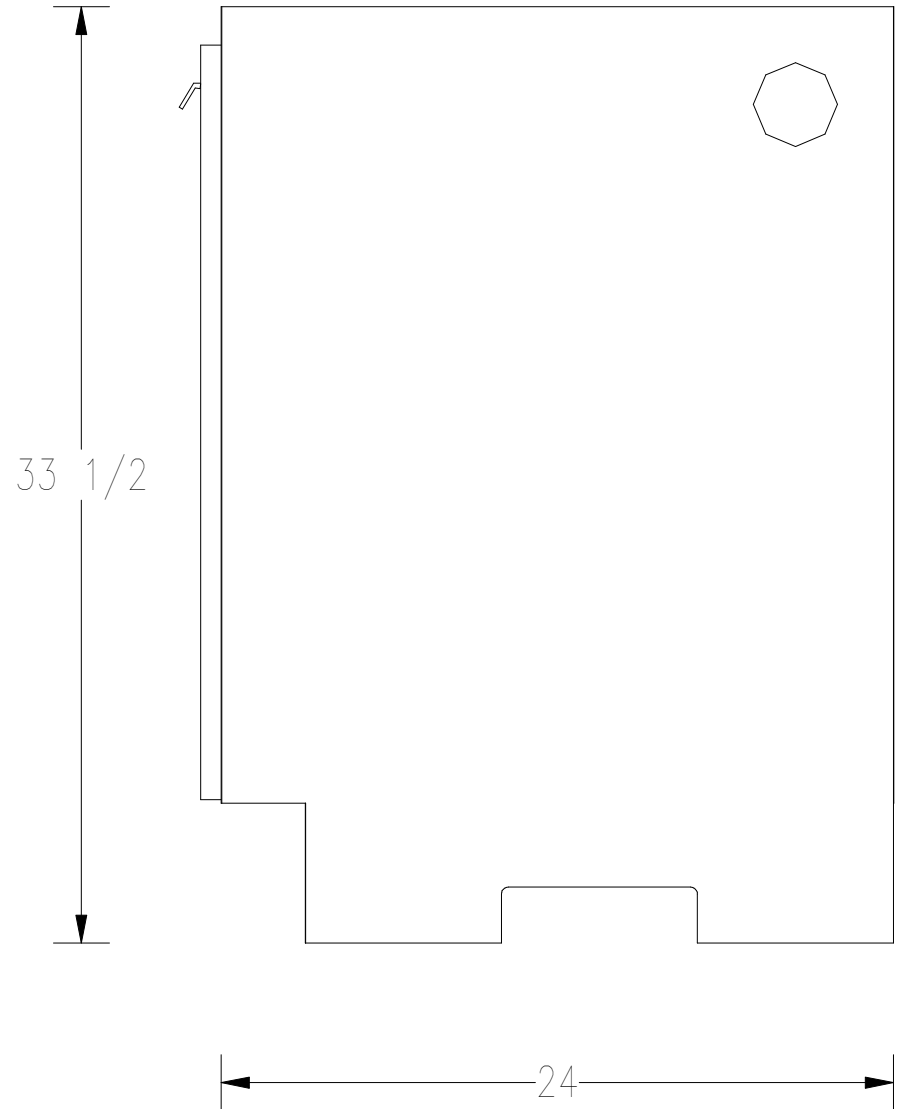
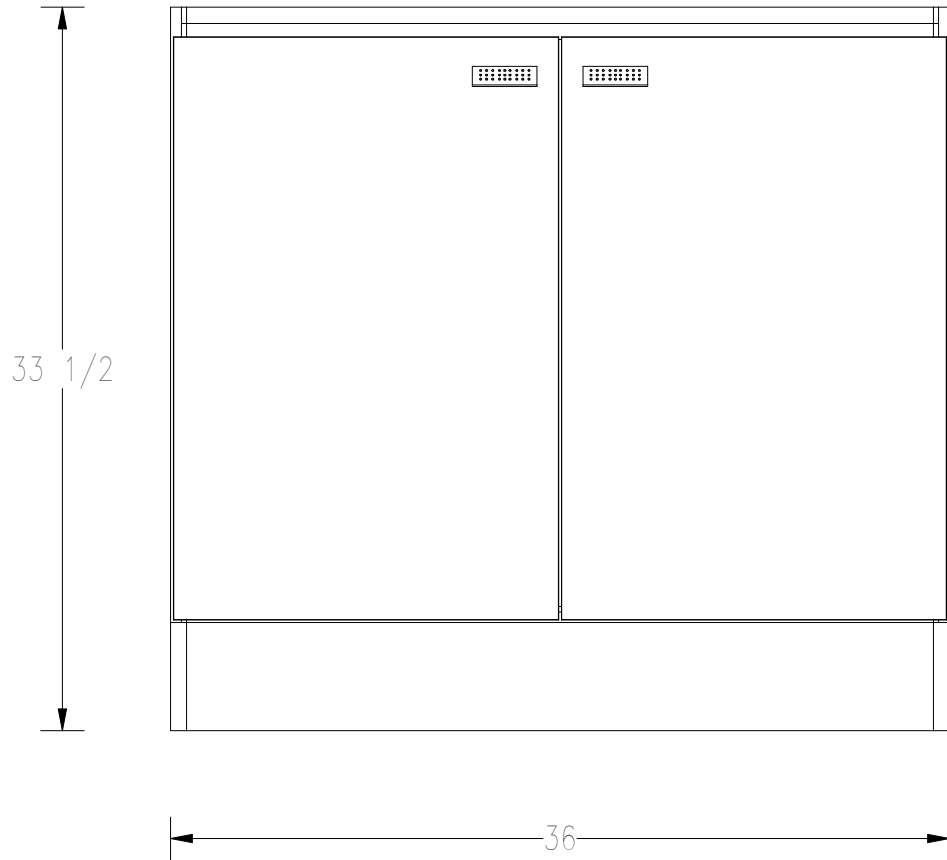


15 Elaine Drive  
 Hermon, ME 04401  
 p. 207-848-7770  
 f. 207-848-7771  
 www.bdsolid.com

B & D MODULAR CABINETS		DIMENSIONS		△	DATE	REFERENCE	SHEET #
PRODUCT NAME:	STORAGE 32□	WIDTH:	32	--	--	--	01
PRODUCT ID:	GS32 - 2	HEIGHT:	33 1/2				
PRODUCT DISCRPTION:	STORAGE 32	DEPTH:	24				
DRAWN BY:	D. PELLETIER	TOE:	HEIGHT = 5 RECESS = 3				

This drawing was prepared exclusively for you with the understanding that b&d - fabrication by design reserves the sole rights to its possession and use. Any reproduction or use of this drawing that is detrimental to our business is prohibited.

# GS36 - 2



15 Elaine Drive  
 Hermon, ME 04401  
 p. 207-848-7770  
 f. 207-848-7771  
 www.bdsolid.com

## B & D MODULAR CABINETS

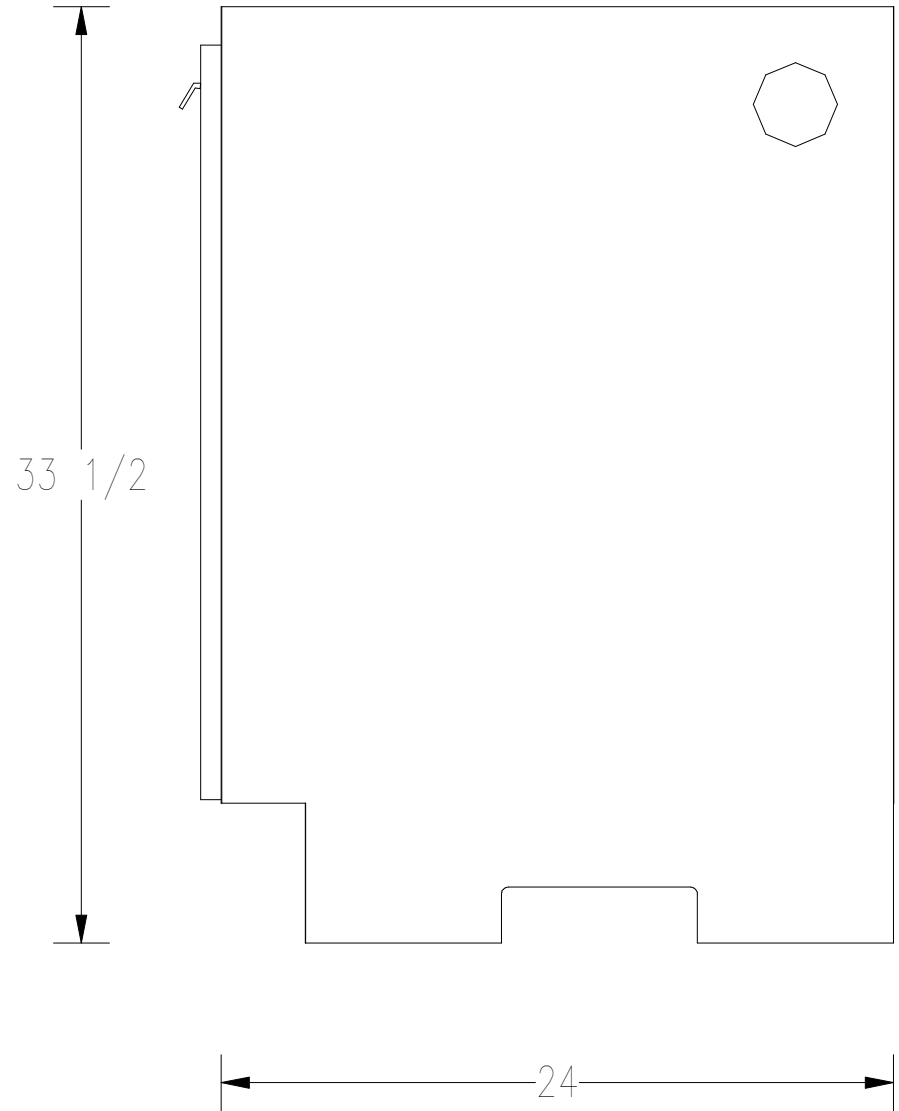
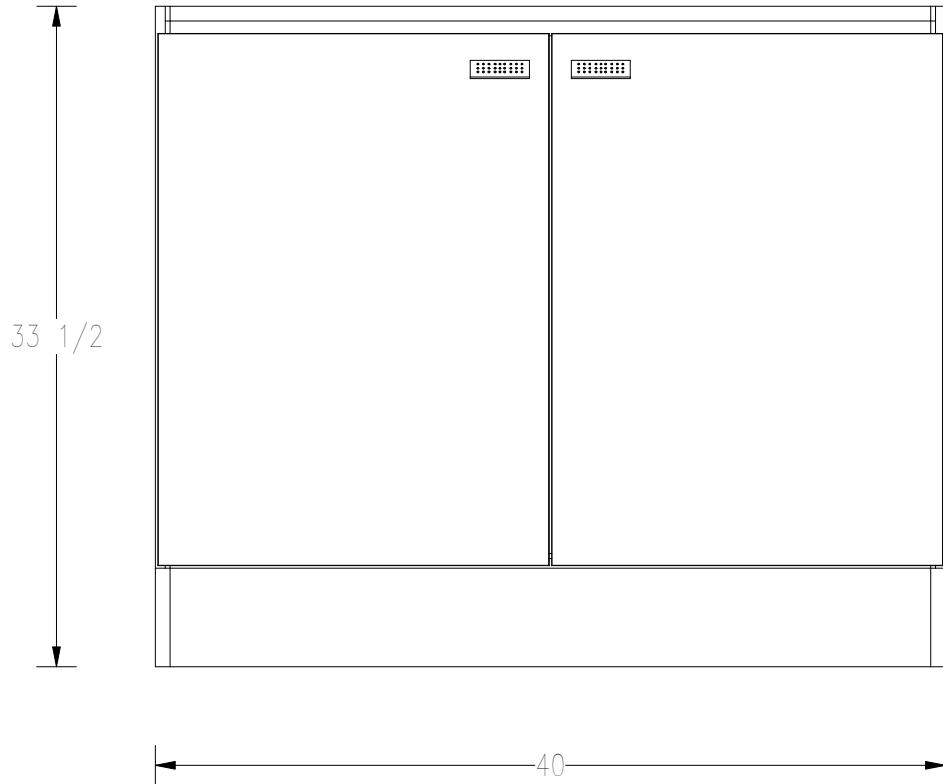
PRODUCT NAME:	STORAGE 36
PRODUCT ID:	GS36 - 2
PRODUCT DISCRPTION:	STORAGE 36
DRAWN BY:	D. PELLETIER

## DIMENSIONS

WIDTH:	36
HEIGHT:	33 1/2
DEPTH:	24
TOE:	HEIGHT = 5 RECESS = 3

△	DATE	REFERENCE	SHEET #
--	--	--	01

# GS40 - 2



15 Elaine Drive  
 Hermon, ME 04401  
 p. 207-848-7770  
 f. 207-848-7771  
 www.bdsolid.com

B & D MODULAR CABINETS	
PRODUCT NAME:	STORAGE 40 □
PRODUCT ID:	GS40 - 2
PRODUCT DISCRIPTION:	STORAGE 40
DRAWN BY:	D. PELLETIER

DIMENSIONS	
WIDTH:	40
HEIGHT:	33 1/2
DEPTH:	24
TOE:	HEIGHT = 5 RECESS = 3

△	DATE	REFERENCE
--	--	--

SHEET #  
01

This drawing was prepared exclusively for you with the understanding that b&d - fabrication by design reserves the sole rights to its possession and use. Any reproduction or use of this drawing that is detrimental to our business is prohibited.